

Data subject to change without prior notice  
Edition 03/2020 © 2020 JMG Cranes S.p.A. All rights reserved  
Rev.1 - 03/20



## Electric Pick & Carry Cranes

### JMG Cranes S.p.A.

Sales & Service Office

Via Bergamo, 142

26100 Cremona - Italy

t +39 0372 1786738

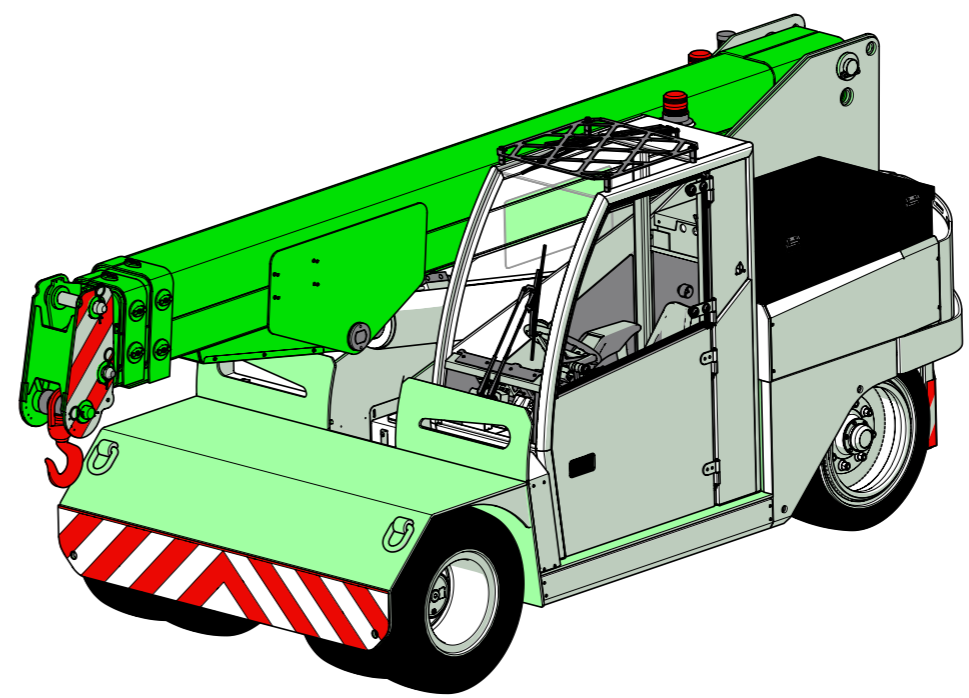
Production Plant

Via Sito Nuovo 14

29010 Sarmato (PC) - Italy

t +39 0523 8486

e info@jmgcranes.com



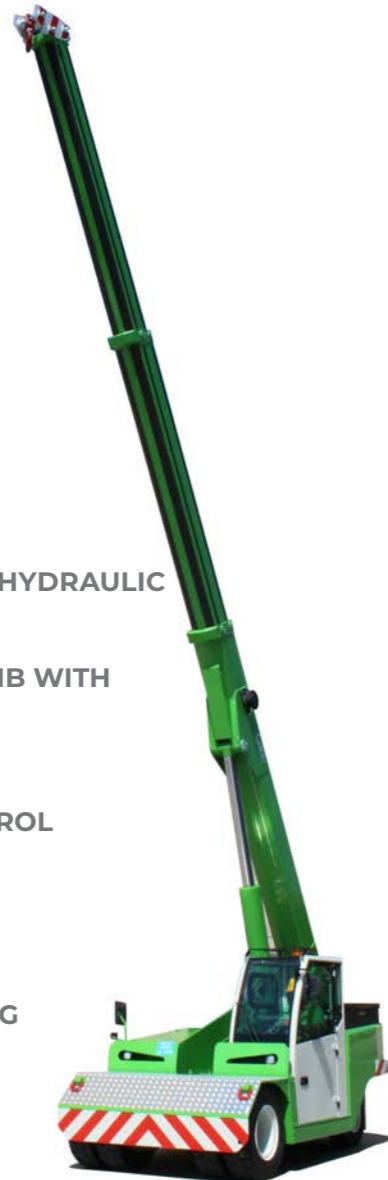
**MC 120 (inch)**

**Max Capacity 26,400 lbs**


[www.jmgcranes.com](http://www.jmgcranes.com)




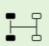








HYDRAULICALLY TELESCOPING PROPORTIONALLY TYPE BOOM  
 FRONT-WHEELS DRIVE WITH COUNTER ROTATION  
 REMOVABLE COUNTERWEIGHTS  
 180° REAR STEERING



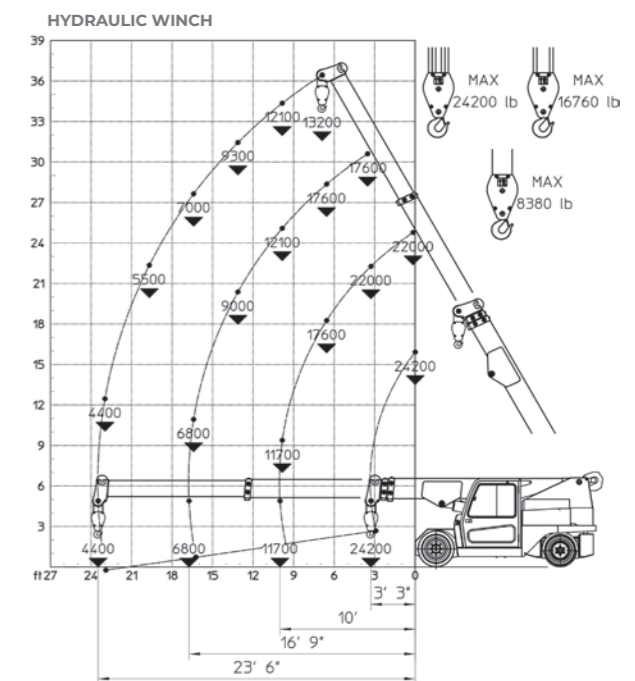
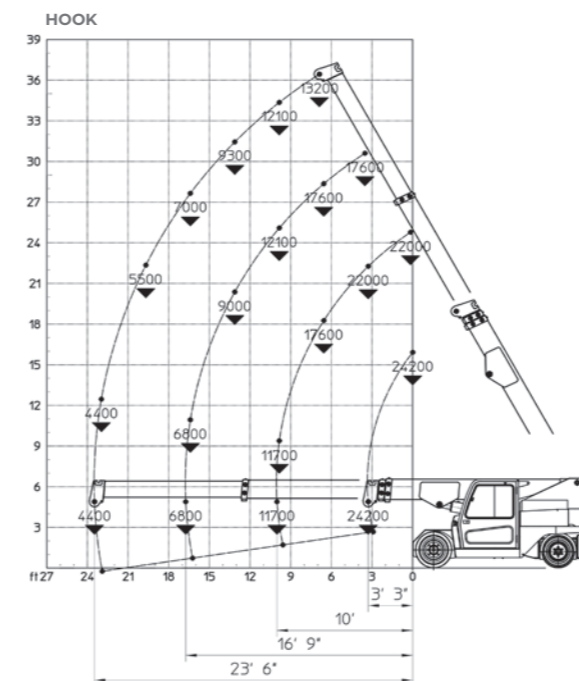
### Options :

- HYDRAULIC WINCH
- HYDRAULIC JIB WITH HYDRAULIC EXTENSION
- BENDABLE MANUAL JIB WITH MANUAL EXTENSION
- NON-MARKING TIRES
- RADIO REMOTE CONTROL
- HYDRAULIC FORKS
- MAN BUCKET
-  ATEX CONVERSIONS
- CUSTOMIZED PAINTING




## Technical features

Max Capacity lbs	 26,400	 Front-wheels drive. 2 electric motors AC 7,5 kW 80V Insulation class H	LMI	Electronic safe load indicator and tilting moment limiter
	Dimension inch	 13'2"x6'5"x6'7"		 Total Kg. lbs 29,500 Removable counterweights lbs 6,600
			 80 V - 840 Ah 8 working hours	 Fabricated from preformed and welded quality steel plate
		 Front nr. 4 superelastic 300-15" Rear nr. 2 superelastic 250-15"	 +60°/-8°	
		 Rear Steering angle -90°/+90°	 Motor driven pump 1x16 kW-80 V AC	

## Load charts



## EU Standards CE

	UNI ISO 4030-1: A1
	2006/42/CE - 2000/14/CE - 2014/30 UE 2014/35/UE - D.Lgs 262/2002 subsequent modifications
	EN 13000:2014 subsequent modifications

## Dimensions

