

Data subject to change without prior notice
Edition 03/2021 © 2021 JMG Cranes S.p.A. All rights reserved
Rev. 0 - 03/2021

JMG Cranes S.p.A.

Sales & Service Office

Via Bergamo, 142

26100 Cremona - Italy

t +39 0372 1786738

Production Plant

Via Sito Nuovo 14

29010 Sarmato (PC) - Italy

t +39 0523 8486

e info@jmgcranes.com



Electric Pick & Carry Cranes



MC 250.09FL (metric)
Max Capacity hydraulic forks
25t@0.9m

www.jmgcranes.com

JMG[®]
movetosolution

MC 250.09FL

- REAR GROUP WITH TWO INDEPENDENT ROTATION GROUPS
- FRONT WHEELS DRIVE WITH COUNTERROTATION
- MAST FREE LIFT
- REMOVABLE COUNTERWEIGHTS
- REMOVABLE GROUP



Optionals:

- HYDRAULIC CRANE BOOM WITH ELECTRONIC SAFE LOAD INDICATOR AND TILTING MOMENT LIMITER
- NON MARKING TIRES
- RADIO REMOTE CONTROL
- ATEX CONVERSIONS
- CUSTOMIZED PAINTING

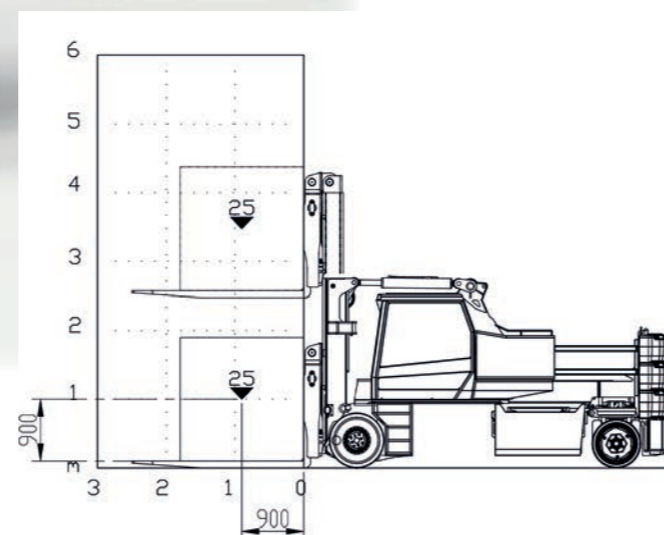
Technical features

Forks with open group	25t@0.9m
Forks with closed group	16.5t@0.9m
Dimensions	4120x1800x2750 mm

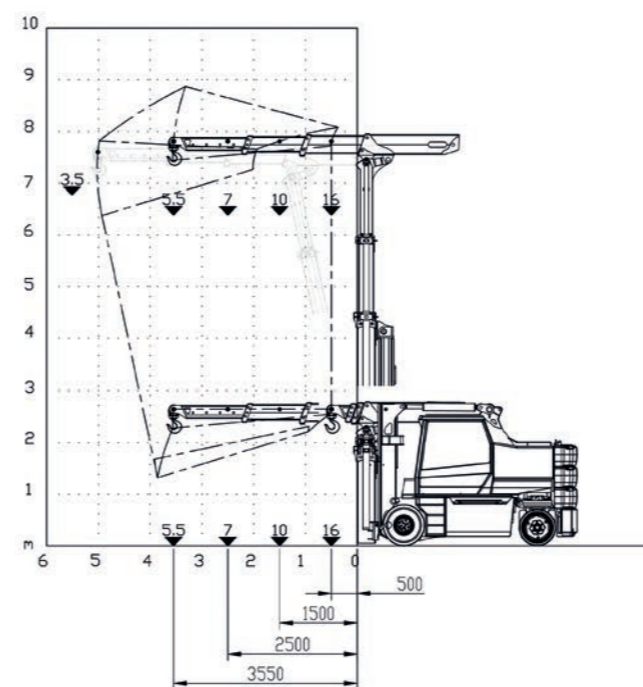
Front-wheels drive. N°2 electric motors AC 12 kW 96V	Hydraulically foot controlled service brake on all wheels, hydraulically automatic or button controlled parking brake on front wheels
Total with forks Kg. 25.000 Total with crane boom Kg. 25.000	Fabricated from preformed and welded quality steel plate
Weight support and fork lenght Kg. 3.000 Crane boom weight Kg. 3.000 Removable ballasts weight Kg. 6.000	Mast angle inclination +12°/-7°
96 V - 1050 Ah	N° 1 electric motor AC 35kW 96V
800x410 in polyurethane cushion rear wheels: nr 4 in cushion 28x10x22	
Rear	

Load charts

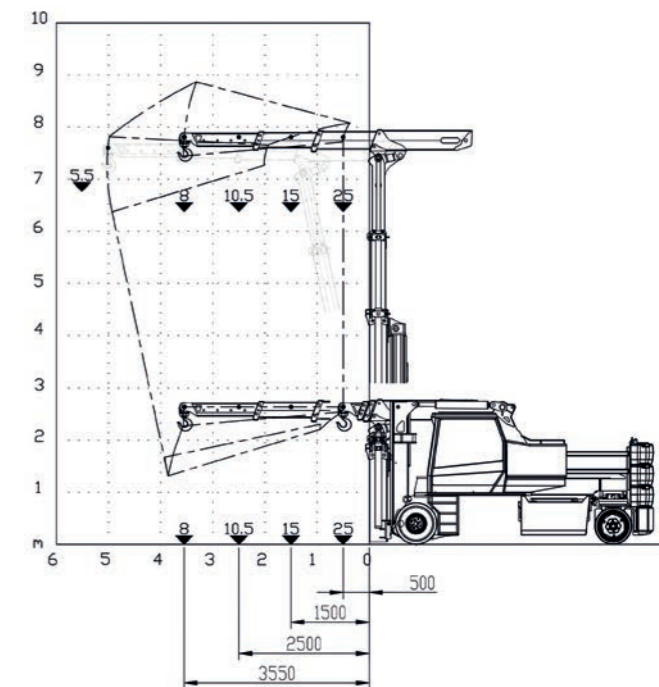
FORKS CAPACITY - ALL COUNTERWEIGHTS - OPEN GROUP



BOOM CAPACITY ON THE MAST - ALL COUNTERWEIGHTS - CLOSED GROUP



BOOM CAPACITY ON THE MAST - ALL COUNTERWEIGHTS - CLOSED GROUP



EU Standards CE

	EN 13000:2014 ONLY HYDRAULIC BOOM
	UNI ISO 3691-1983 IT UNI ISO 22915-2-2020 EN and subsequent modifications

Dimensions

