

Data subject to change without prior notice  
Edition 03/2020 © 2020 JMG Cranes S.p.A. All rights reserved  
Rev.1 - 03/20



## Electric Pick & Carry Cranes

### JMG Cranes S.p.A.

Sales & Service Office

Via Bergamo, 142

26100 Cremona - Italy

t +39 0372 1786738

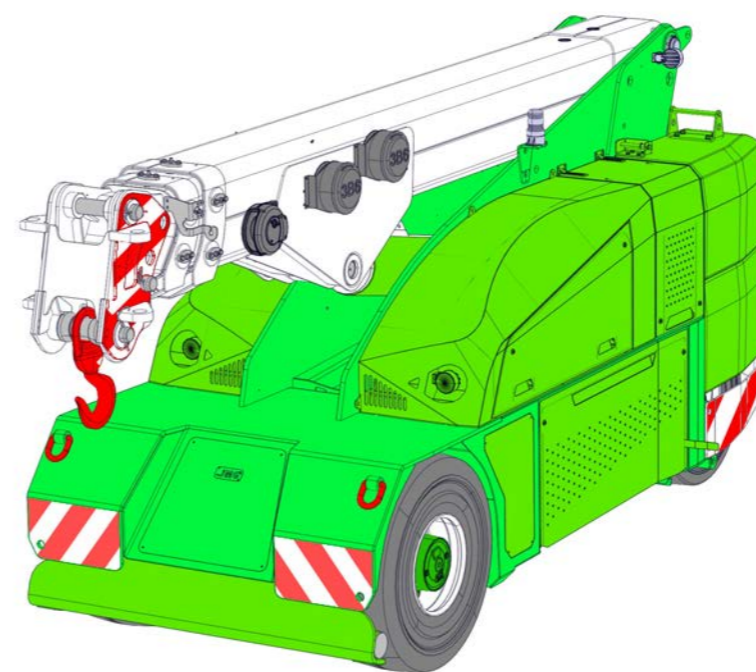
Production Plant

Via Sito Nuovo 14

29010 Sarmato (PC) - Italy

t +39 0523 8486

e info@jmgcranes.com



**MC 100S (inch)**  
Max Capacity 22,000 lbs

[www.jmgcranes.com](http://www.jmgcranes.com)



# MC 100S

RADIO-REMOTE CONTROL ON DRIVING, STEERING, BOOM MOVEMENTS, WINCH AND OTHER ACCESSORIES

FRONT-WHEELS DRIVE WITH COUNTER ROTATION

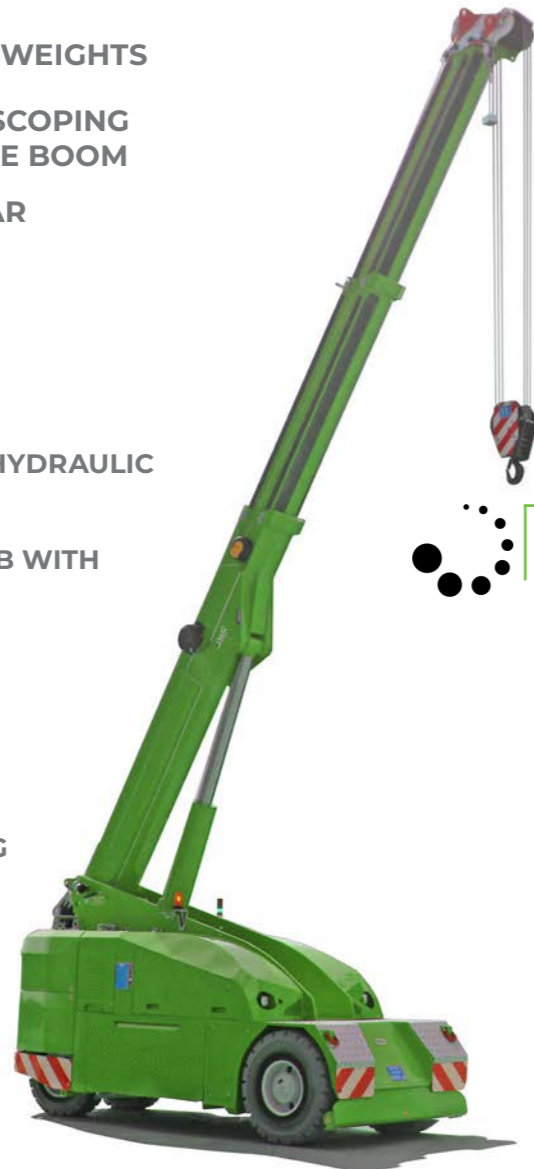
REMOVABLE COUNTERWEIGHTS

HYDRAULICALLY TELESCOPING PROPORTIONALLY TYPE BOOM

FRONT STABILISING BAR

### Options :

- HYDRAULIC WINCH
- HYDRAULIC JIB WITH HYDRAULIC EXTENSION
- BENDABLE MANUAL JIB WITH MANUAL EXTENSION
- NON-MARKING TIRES
- HYDRAULIC FORKS
- MAN BUCKET
- ATEX CONVERSIONS
- CUSTOMIZED PAINTING

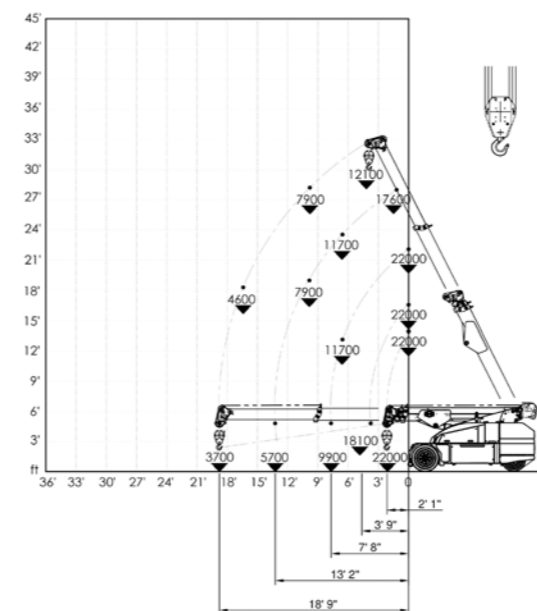


## Technical features

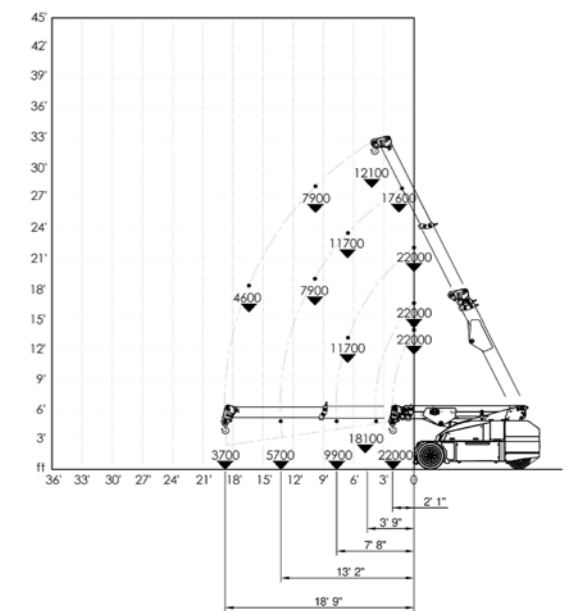
|   |                                  |  |   |
|---|----------------------------------|--|---|
| Max Capacity lbs  | 22,000                           | Front-wheels drive.<br>2 electric motors AC 7,5 kW 80V<br>Insulation class H | <b>LMI.</b> Electronic safe load indicator and tilting moment limiter |
|   | Dimensions inch                  | 12'5"x4'10"x6'4"   | Automatic braking system on all wheels                                |
| Total lbs 25,000<br>Removable counterweights lbs 9,000              |                                  | 80 V - 810 Ah<br>8 working hours   | Fabricated from preformed and welded quality steel plate              |
| Front nr. 2 superelastic 355-15"<br>Rear nr. 2 superelastic 250-15" | Rear<br>Steering angle -90°/+90° | +65°/-10°  | Motor driven pump 20 kW - 80 V AC,<br>Insulation class H              |

## Load charts

HYDRAULIC WINCH



MANUAL JIB



## EU Standards CE

|  |   |
|--|---|
|  | UNI ISO 4030-1: A1  |
|  | 2006/42/CE- 2000/14/CE -2014/30 UE 2014/35/UE - D.Lgs 262/2002 subsequent modifications |
|  | EN 13000:2014 subsequent modifications  |



## Dimensions

