

Data subject to change without prior notice  
Edition 04/2020 © 2020 JMG Cranes S.p.A. All rights reserved  
Rev.1 - 04/2020

## JMG Cranes S.p.A.

Sales & Service Office

Via Bergamo, 142

26100 Cremona - Italy

t +39 0372 1786738

Production Plant

Via Sito Nuovo 14

29010 Sarmato (PC) - Italy

t +39 0523 8486

e info@jmgcranes.com



## Electric Pick & Carry Cranes



**MC 250S (metric)**

**Max Capacity 55,000 lbs**

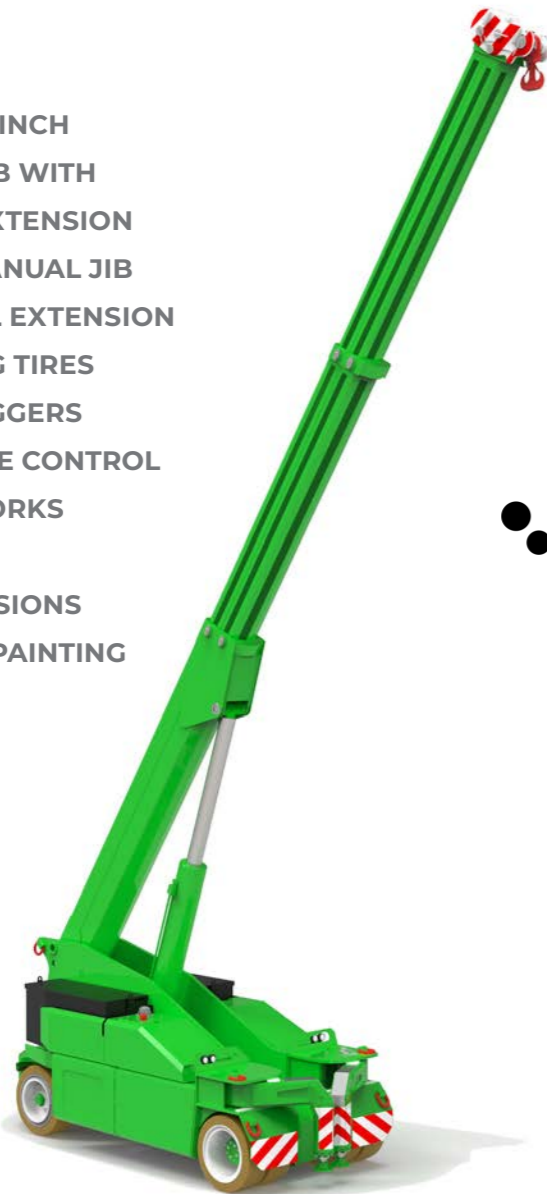
[www.jmgcranes.com](http://www.jmgcranes.com)



HYDRAULICALLY TELESCOPING PROPORTIONAL TYPE BOOM  
 FRONT-WHEELS DRIVE WITH COUNTER ROTATION  
 180° REAR STEERING  
 REMOVABLE COUNTERWEIGHTS

**Options :**

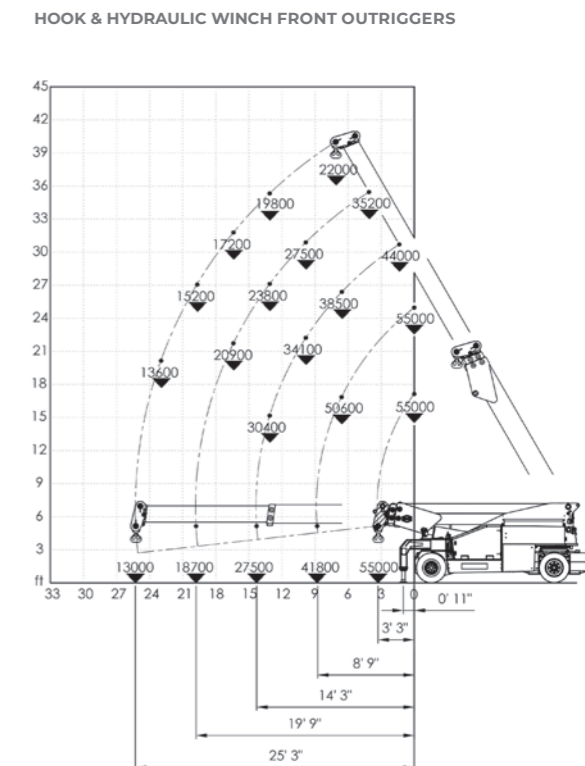
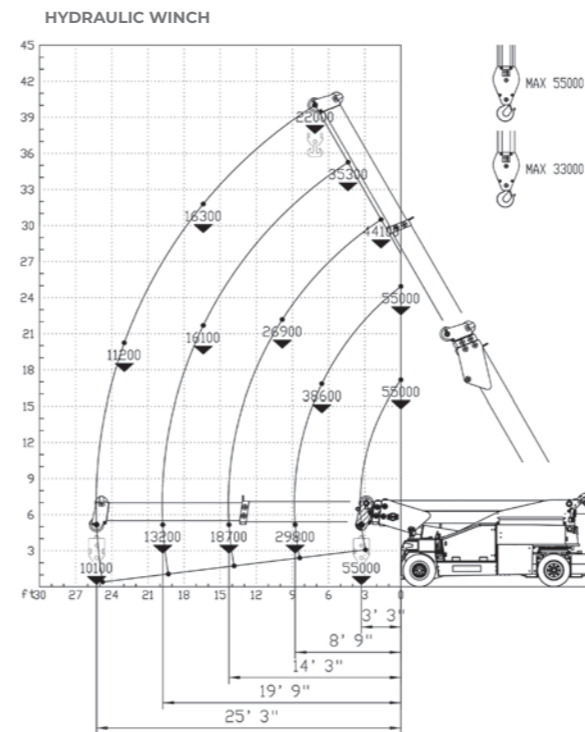
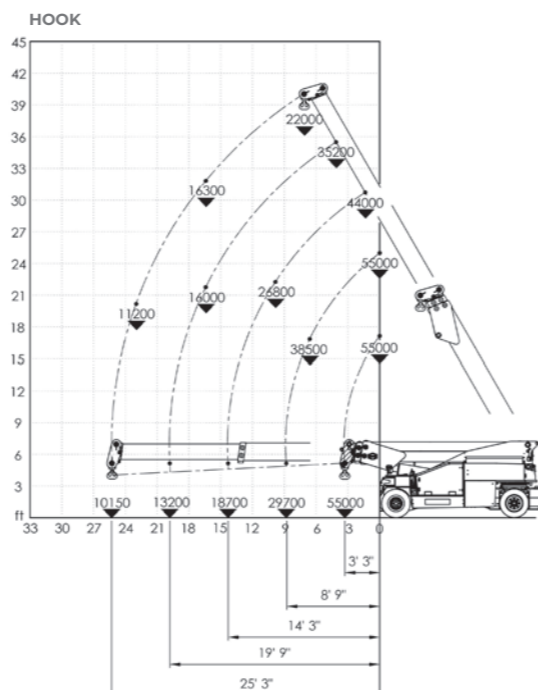
- HYDRAULIC WINCH
- HYDRAULIC JIB WITH HYDRAULIC EXTENSION
- BENDABLE MANUAL JIB WITH MANUAL EXTENSION
- NON-MARKING TIRES
- FRONT OUTRIGGERS
- RADIO REMOTE CONTROL
- HYDRAULIC FORKS
- MAN BUCKET
- ATEX CONVERSIONS
- CUSTOMIZED PAINTING



**Technical features**

Max Capacity lbs	55,000	Front-wheels drive. 2 electric motors AC 12 kW 96V Insulation class H	<b>LMI</b> Electronic safe load indicator and tilting moment limiter
	Dimensions inch	15"7"x7"41"x7"2"	Hydraulically foot controlled service brake on all wheels, hydraulically automatic or button controlled parking brake on front wheels
Max Capacity lbs		96 V - 1125 Ah 8 working hours	Fabricated from preformed and welded quality steel plate
	Dimensions inch	Front nr. 4 superelastic 355/50-20" Rear nr. 2 superelastic 355/50-20"	+60°/-7°
Max Capacity lbs		Rear Steering angle -90°/+90°	Motor driven pump 1x23 kW - 96 V AC.

**Load charts**



**EU Standards CE**

	UNI ISO 4301-2: A1
	2006/42 CE-2014/30 UE-2014/35 UE- 2000/14 e and subsequent modifications
	EN 13000:2014 ANSI/ASME B30.5-2011 and subsequent modifications

**Dimensions**

