

Data subject to change without prior notice  
Edition 03/2020 © 2020 JMG Cranes S.p.A. All rights reserved  
Rev.1 - 03/20



## JMG Cranes S.p.A.

Sales & Service Office

Via Bergamo, 142

26100 Cremona - Italy

t +39 0372 1786738

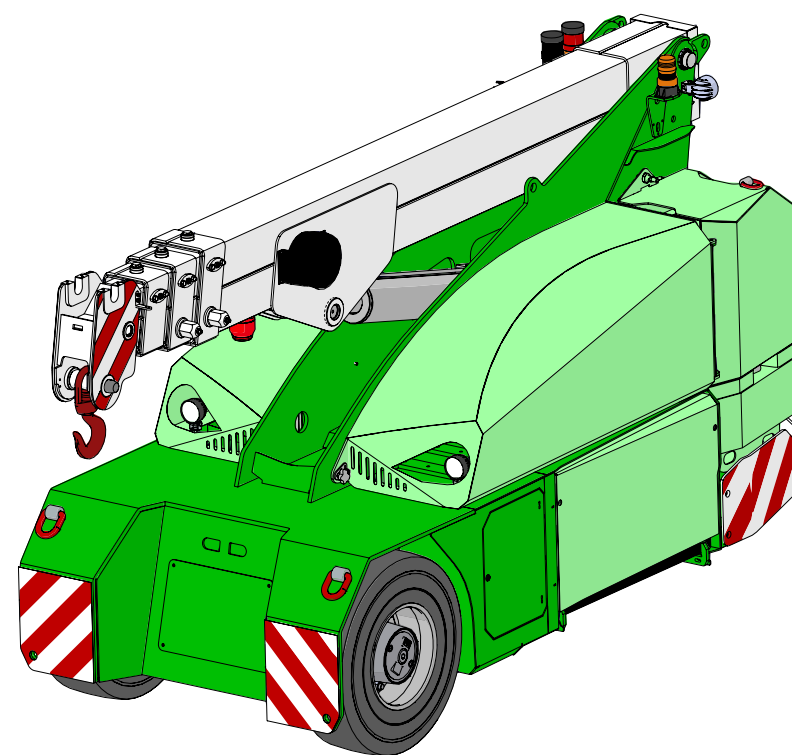
Production Plant

Via Sito Nuovo 14

29010 Sarmato (PC) - Italy

t +39 0523 8486

e info@jmgcranes.com



## Electric Pick & Carry Cranes

**MC 60S (inch)**  
Max Capacity 13,200 lbs

[www.jmgcranes.com](http://www.jmgcranes.com)



# MC 60S

RADIO-REMOTE CONTROL ON DRIVING, STEERING, BOOM MOVEMENTS, WINCH AND OTHER ACCESSORIES

FRONT-WHEELS DRIVE WITH COUNTER ROTATION

REMOVABLE COUNTERWEIGHTS

HYDRAULICALLY TELESCOPING SEQUENTIAL TYPE BOOM

### Options :

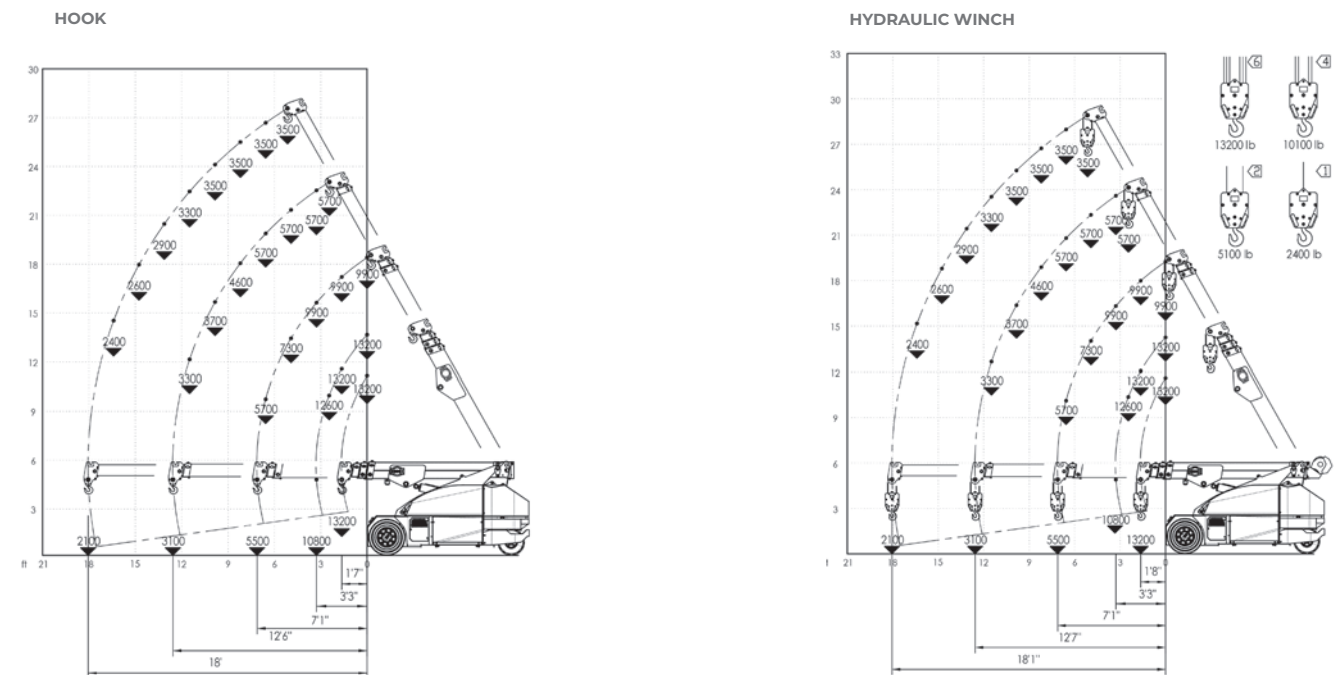
- HYDRAULIC WINCH
- HYDRAULIC FLY JIB
- BENDABLE MANUAL JIB WITH MANUAL EXTENSION
- NON-MARKING TIRES
- HYDRAULIC FORKS
- MAN BUCKET
- ATEX CONVERSIONS
- CUSTOMIZED PAINTING



## Technical features

Max Capacity lbs	13,200	Front-wheels drive. 2 electric motors AC 3,5 kW 72V Insulation class H	<b>LMI.</b> Electronic safe load indicator and tilting moment limiter
	Dimensions inch	10'6"x3'9"x6'4"	Total lbs 15,000 Removable counterweights lbs 4,100
		72 V - 640 Ah 8 working hours	Automatic braking system on all wheels
	Front nr. 2 superelastic 250-15" Rear nr. 2 superelastic 21x8-9"	Fabricated from preformed and welded quality steel plate	+60°/-15°
	Rear Steering angle -90°/+90°	Motor driven pump 12 kW - 72 V AC, Insulation class H	

## Load charts



## EU Standards CE

	UNI ISO 4030-1: A1
	2006/42/CE- 2000/14/CE -2014/30 UE 2014/35/UE - D.Lgs 262/2002 subsequent modifications
	EN 13000:2014 subsequent modifications

## Dimensions

