

Data subject to change without prior notice  
Edition 03/2020 © 2020 JMG Cranes S.p.A. All rights reserved  
Rev.1 - 03/20



# Electric Pick & Carry Cranes

## JMG Cranes S.p.A.

Sales & Service Office  
Via Bergamo, 142  
26100 Cremona - Italy  
t +39 0372 1786738  
Production Plant  
Via Sito Nuovo 14  
29010 Sarmato (PC) - Italy  
t +39 0523 8486  
e info@jmgcranes.com

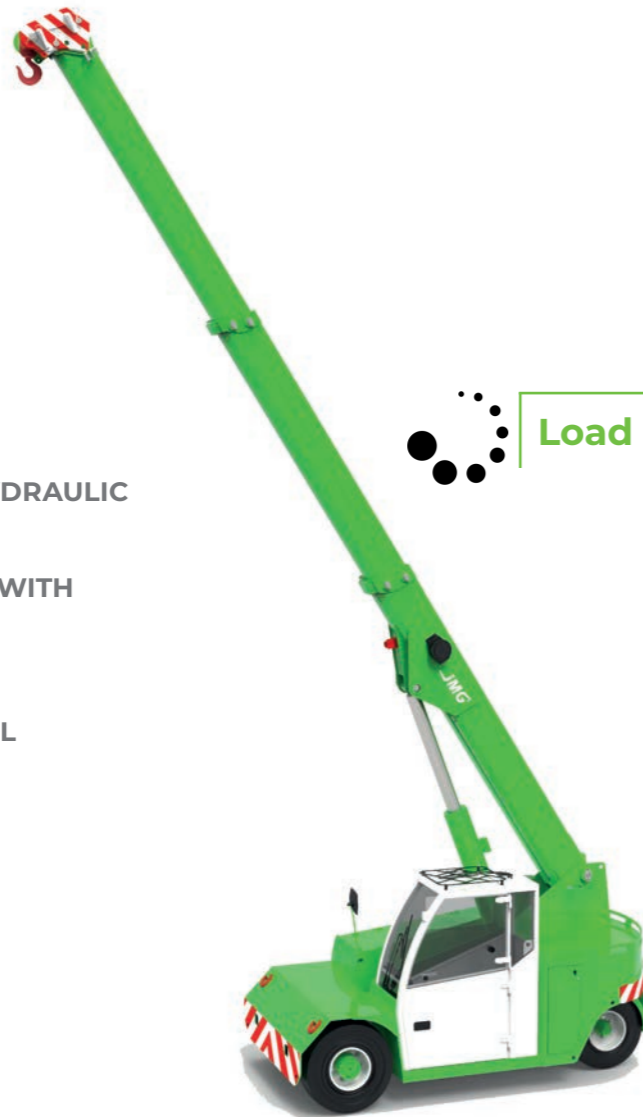


**MC 85 (inch)**  
Max Capacity 18,700 lbs

[www.jmgcranes.com](http://www.jmgcranes.com)



**HYDRAULICALLY TELESCOPING PROPORTIONALLY TYPE BOOM**  
**FRONT-WHEELS DRIVE WITH COUNTER ROTATION**  
**180° REAR STEERING**



### Options :

- HYDRAULIC WINCH
- HYDRAULIC JIB WITH HYDRAULIC EXTENSION
- BENDABLE MANUAL JIB WITH MANUAL EXTENSION
- NON-MARKING TIRES
- RADIO REMOTE CONTROL
- HYDRAULIC FORKS
- MAN BUCKET
- ATEX CONVERSIONS
- CUSTOMIZED PAINTING

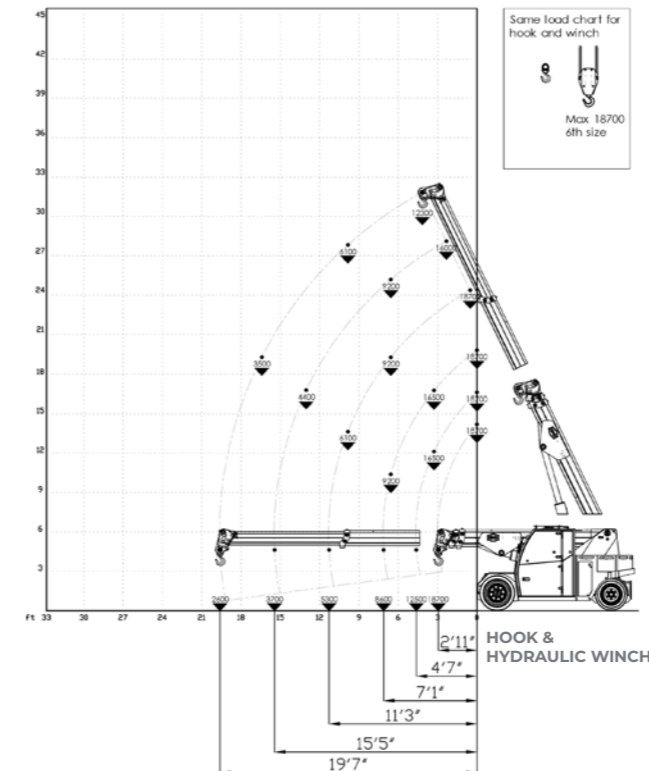


### Technical features

Max Capacity lbs	18,700
Dimension inch	11'12"x5'7"x6'3"

Front-wheels drive. 2 electric motors AC 7,5 kW 72V Insulation class H	LMI. Electronic safe load indicator and tilting moment limiter
Total lbs 20,000	Hydraulically foot controlled service brake on all wheels, hydraulically automatic or button controlled parking brake on front wheels
72 V - 620 Ah 8 working hours	Fabricated from preformed and welded quality steel plate
Front nr. 2 superelastic 355x65/15" Rear nr. 2 superelastic 7.50/15"	+60°/-15°
Rear Steering angle -90°/+90°	Motor driven pump 1x16 kW-72 V AC

### Load charts



### EU Standards CE

	UNI ISO 4030-1: A1
	2006/42/CE - 2000/14/CE - 2014/30 UE 2014/35/UE - D.Lgs 262/2002 subsequent modifications
	EN 13000:2014 subsequent modifications



### Dimensions

