

JMG Cranes S.p.A.

Sales & Service Office

Via Bergamo, 142

26100 Cremona - Italy

t +39 0372 1786738

Production Plant

Via Sito Nuovo 14

29010 Sarmato (PC) - Italy

t +39 0523 8486

e info@jmgcranes.com



Data subject to change without prior notice
Edition 03/2020 © 2020 JMG Cranes S.p.A. All rights reserved
Rev.1 - 03/20

LIGE

ELECTRIC PICK & CARRY CRANES

SINCE 1945



Lige40

LIGE40 8800 lbs

BATTERY:	48 V - 575 Ah. Battery meter indicator on dashboard.
BRAKE:	Service brake: hydraulic with pedal control. Handbrake: hydraulic with automatic control.
FRAME:	Fabricated from preformed and welded quality steel plate with built-in counterweight.
WHEELS:	Front: 2 superelastic wheels 23x10x12. Rear: 2 superelastic wheels 18x7x8.
BOOM:	Telescoping boom with 4 elements: 1 base fixed and 3 with hydraulic development on teflon bearing strips. Angle boom: + 55° / -14°.
TRACTION ENGINE:	Electric motors 2x3.5 kW, 48 V. AC controlled by inverter. Isulation class H.
STEERING :	Rear by hydraulic motor controlled by an hydrostatic power steering with load sensing valve. The power of the hydrostatic system is guaranteed by the hydraulic circuit of the crane.
MOTOR PUMP:	Electric motor 9 kW - 48 V AC. Insulation class H.
L.M.I.:	Electronic load moment indicator system complying to CE safety standards, complete with display indicating: load lifted, maximum admitted load, tilting percentage, operating radius, angle, outreach and complete with warning lights of the operating status.
WEIGHT:	9240 lbs
OPTIONS ON REQUEST:	Hydraulic winch, manual jib, non-marking tires, ATEX transformations.
CRANE CLASSIFICATION ACCORDING TO UNI ISO 4301-1:	A3
EU STANDARDS CE:	2006/42 CE MD - 2014/30 CE EMC - 2006/95 CE LVD - 2000/14 CE and subsequent modifications.
REFERENCE STANDARDS:	EN 13000: 2010 UNI ISO 4301-2:2011 and subsequent modifications.



COMFORTABLE CABIN



DASHBOARD

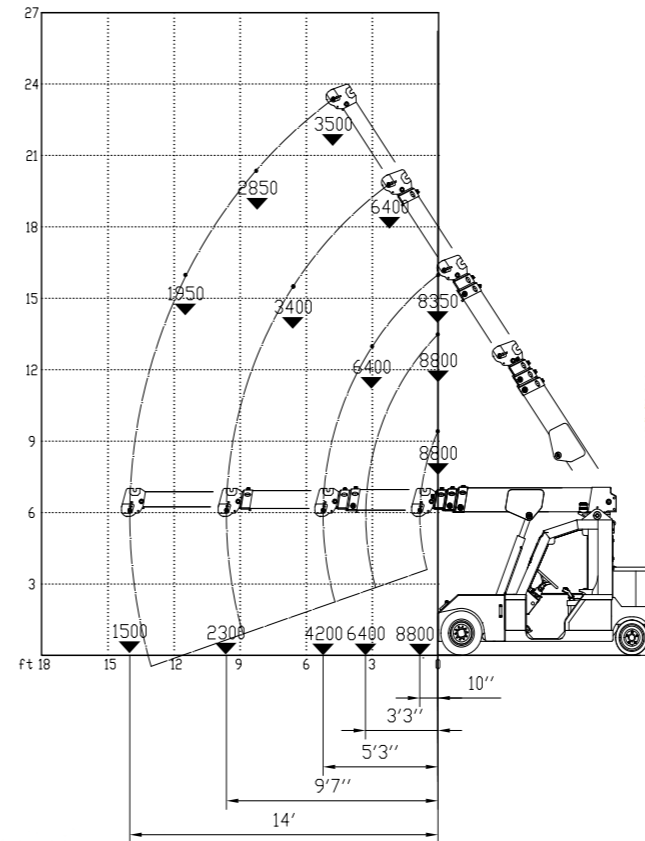


SAFETY BUTTON

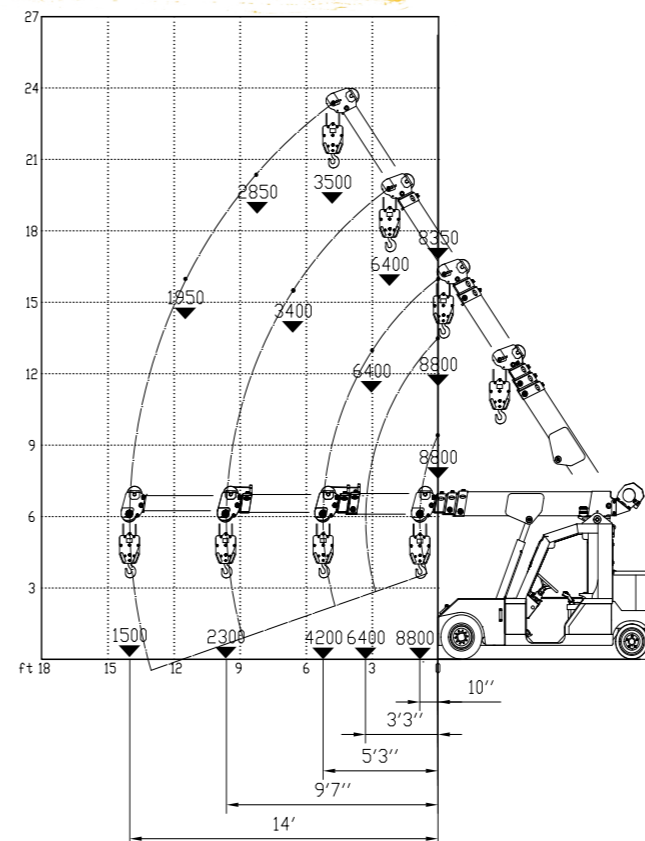


TELESCOPIC BOOM

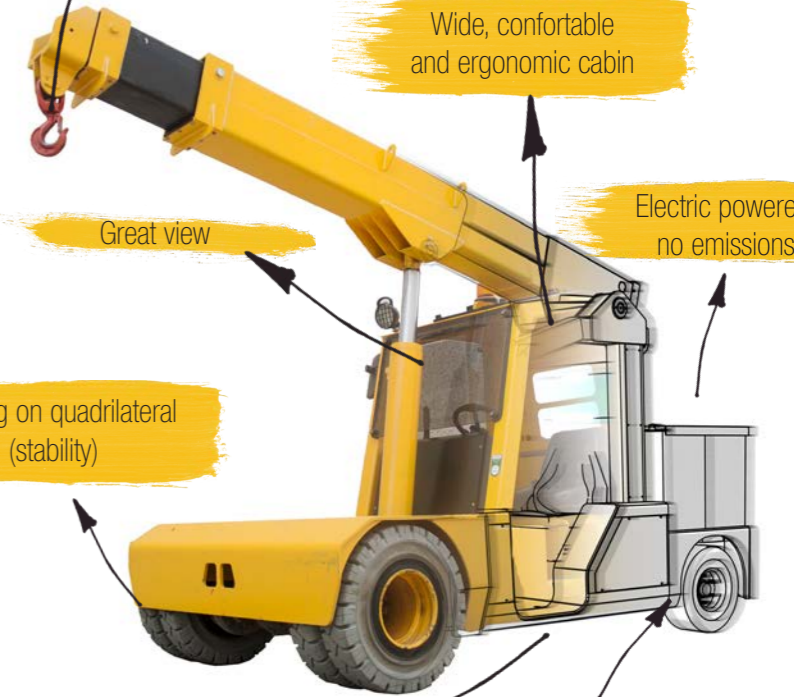
HOOK



HYDRAULIC WINCH



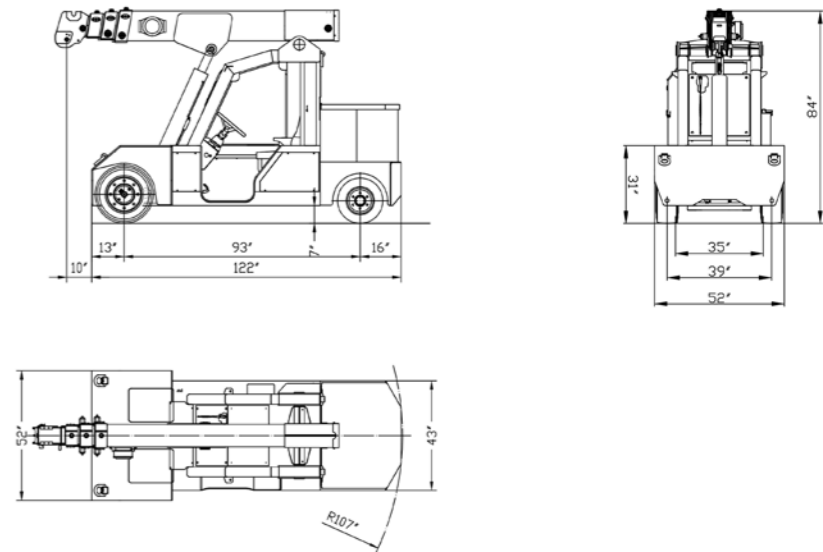
Chance of working with winch, jib and/or extension.



L.M.I. according to EN ISO 13849

Low center of gravity

DIMENSIONS



LIGE