

JMG Cranes S.p.A.

Sales & Service Office

Via Bergamo, 142

26100 Cremona - Italy

t +39 0372 1786738

Production Plant

Via Sito Nuovo 14

29010 Sarmato (PC) - Italy

t +39 0523 8486

e info@jmgcranes.com



Data subject to change without prior notice
Edition 03/2020 © 2020 JMG Cranes S.p.A. All rights reserved
Rev.1 - 03/20

LIGE

ELECTRIC PICK & CARRY CRANES

SINCE 1945



Lige90

LIGE90 19800 lbs

| | |
|--|---|
| BATTERY: | 80 V - 575 Ah. Battery meter indicator on dashboard. |
| BRAKE: | Service brake: hydraulic with pedal control. Handbrake: hydraulic with automatic control. |
| FRAME: | Fabricated from preformed and welded quality steel plate with built-in counterweight. |
| WHEELS: | Front: 4 superelastic wheels 250-15". Rear: 2 superelastic wheels 23 x 10-12". |
| BOOM: | Telescoping boom with 4 elements: 1 base fixed and 3 with hydraulic development on the teflon bearing strips. Angle boom: +56° / -15°. |
| TRACTION ENGINE: | Electric motors 2x7.5 kW, 80 V. AC controlled by inverter. Insulation class H. |
| STEERING : | Rear by hydraulic motor controlled by an hydrostatic power steering with load sensing valve. The power of the hydrostatic system is guaranteed by the hydraulic circuit of the crane. |
| MOTOR PUMP: | Electric motor 12 kW - 80 V AC. Insulation class H. |
| L.M.I.: | Electronic load moment indicator system complying to CE safety standards, complete with display indicating: load lifted, maximum admitted load, tilting percentage, operating radius, angle, outreach and complete with warning lights of the operating status. |
| WEIGHT: | 18700 lbs |
| OPTIONS ON REQUEST: | Hydraulic winch, manual jib, non-marking tires, bundle loader, ATEX transformations. |
| CRANE CLASSIFICATION ACCORDING TO UNI ISO 4301-1: | A3 |
| EU STANDARDS CE: | 2006/42 CE MD - 2014/30 CE EMC - 2006/95 CE LVD - 2000/14 CE and subsequent modifications. |
| REFERENCE STANDARDS: | EN 13000: 2010 UNI ISO 4301-2:2011 and subsequent modifications. |



CONFORTABLE CABIN



DASHBOARD

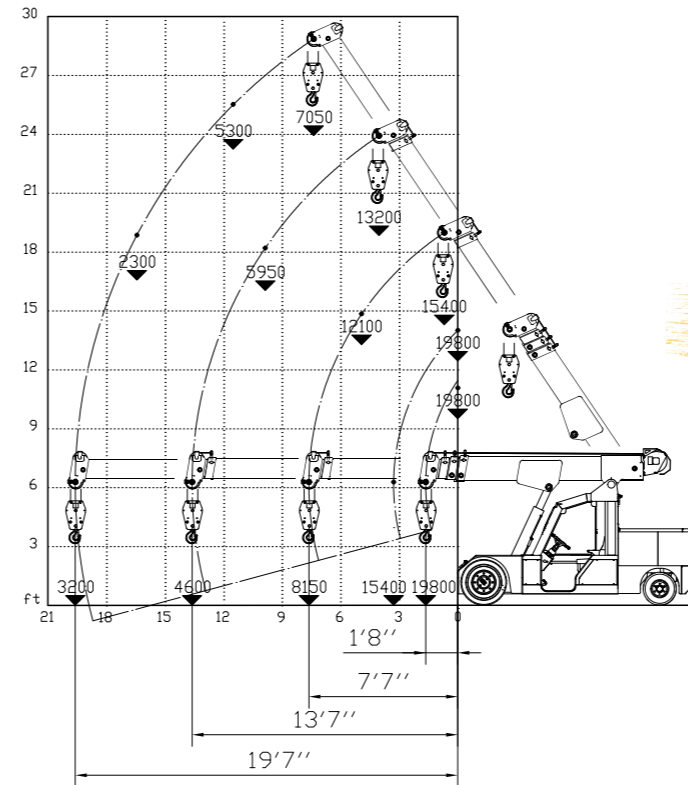


SAFETY BUTTON

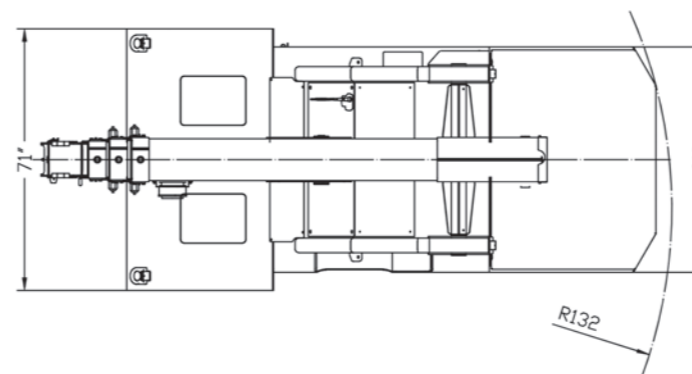
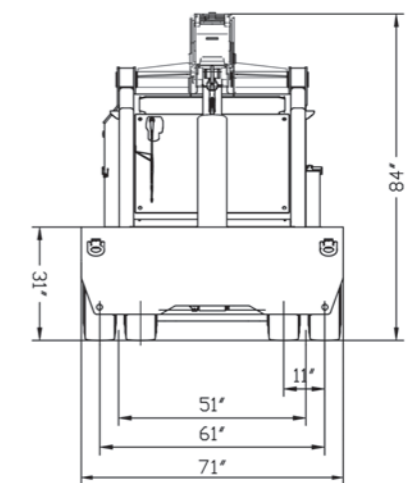
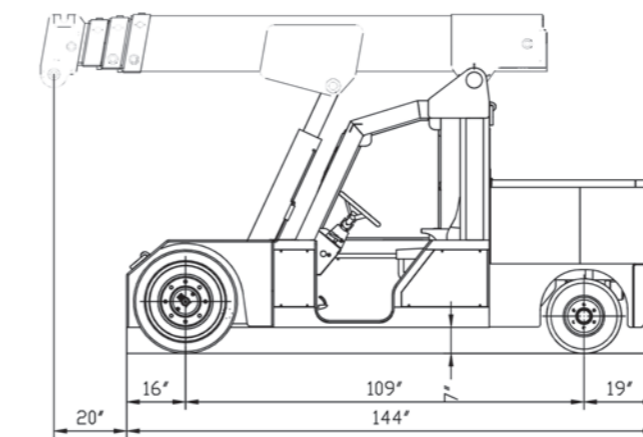


TELESCOPIC BOOM

HOOK/ HYDRAULIC WINCH



DIMENSIONS



Chance of working with winch, jib and/or extension.

Wide, comfortable and ergonomic cabin

Electric powered: no emissions

Great view

Footing on quadrilateral (stability)

L.M.I. according to EN ISO 13849

Low center of gravity

LIGE